

## Table of Contents

- | [Property Details](#)
- | [Floorplan](#)
- | [Relevant Documents](#)
- | [About Greta](#)
- | [About Us](#)
- | [Disclaimer](#)

## Property Details



**39 York Street, Greta**

**UNDER CONTRACT**

3  2  2  **\$475,000**

Opportunity knocks in one of Greta's most desirable and fast-growing pockets!

This original fibro and iron home sits proudly on a generous parcel in a quiet street, just minutes from local shops, Branxton Village, and with easy access to the Hunter Expressway, connecting you seamlessly to Newcastle and the M1 to Sydney.

This property is ideal for:

- \* A full renovation project
- \* A knock-down rebuild
- \* Potential future development (STCA) thanks to its R2 residential zoning

Key Features:

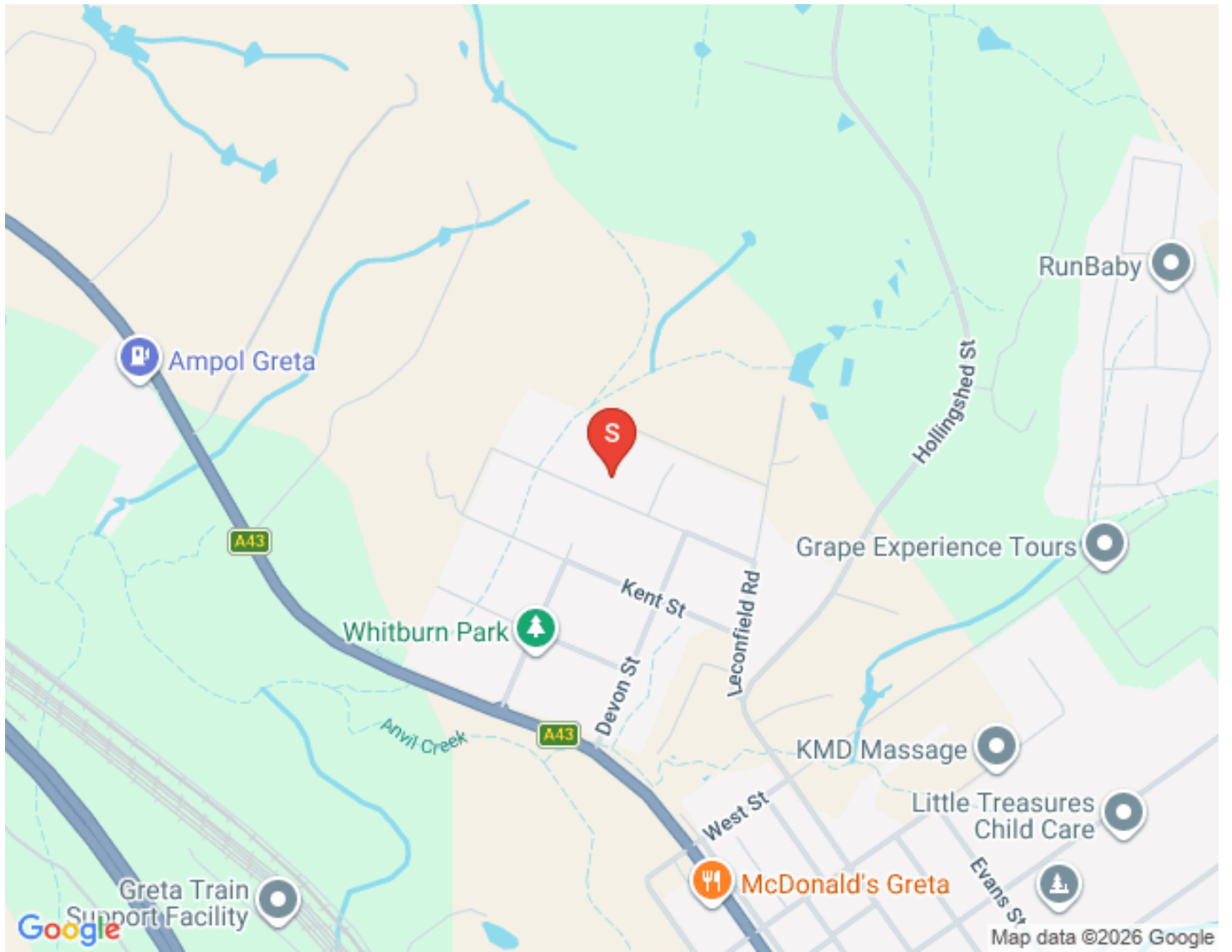
- \* Prime positioning with full services available: water, power, sewer, and phone
- \* Large 1024m<sup>2</sup> block with excellent scope for development (subject to council approval)
- \* Rear shed conversion offering modern shouse-style living: includes bedroom, bathroom and additional storage
- \* Located in a peaceful street with strong capital growth potential

\* Approximate 6.6KW solar system (panels attached to the shed onsite)

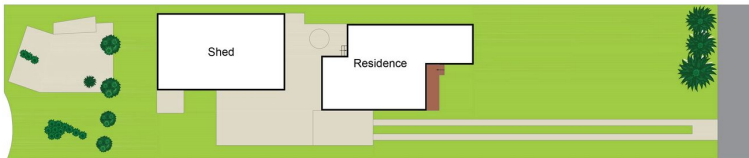
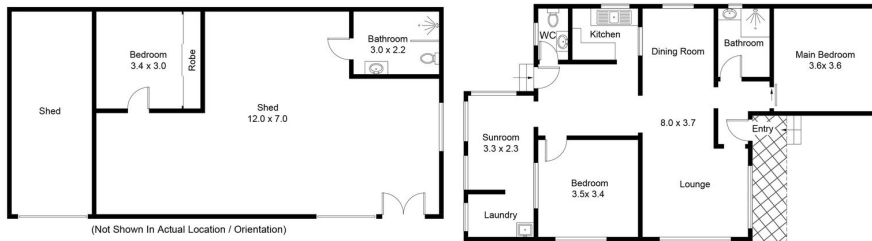
Parcels of this size and scope are rarely offered to market in Greta. Whether you're a developer, investor, or homebuyer with a vision, this is a golden opportunity not to be missed!

Disclaimer: All information contained herein is gathered from sources we deem to be reliable. However, we cannot guarantee its accuracy and interested persons should rely on their own enquiries.

First National Real Estate - We Put You First



# Floorplan



(SITE PLAN NOT TO SCALE)



Approximate Gross Internal Area = 172.5 sq m

## Relevant Documents

[Marketing Contract](#)

[Make An Offer Form](#)

## About Greta

### GRETA - HUNTER VALLEY

Located midway between Cessnock, Singleton and Maitland, Greta is largely a commuter town along with its neighbouring sister town Branxton. Both communities often share sporting teams and both provide for great access to the Hunter Expressway. Greta is a mixture of suburban residential lots as well as larger lifestyle and hobby farm properties and a lovely blend of period and new homes. This along with a thriving main street shopping area allows Greta to cater to families. A multi-national award winning Tidy Town, great pride is taken by the townfolks of this community. We acknowledge the Traditional Custodians of Country throughout Australia and pay respects to their elders past, present and emerging. The suburb of Greta falls on the traditional lands of the Mindaribba people.

### AROUND GRETA

#### SCHOOLS:

- Greta Primary School
- Branxton Primary School
- Rosary Park Catholic Primary School Branxton
  
- St Josephs of Lochinvar High School

#### CAFES AND RESTAURANTS:

- The Girl & The Goat
- Greta Workers Club
- McDonalds & Subway Greta
- The Royal Federal Hotel Branxton
- Huntlee Tavern North Rothbury
- Various world renowned restaurants 15 minutes drive away in Pokolbin and the Hunter Valley Vineyards

#### SHOPPING:

- Baileys of Greta
- IGA and Coles (Branxton and North Rothbury)

## About Us



### **MICHAEL HAGGARTY**

PRINCIPAL, DIRECTOR | CLASS 1 LICENCED REAL ESTATE AGENT

0408 021 921

[mick@fnrem.com.au](mailto:mick@fnrem.com.au)

With over three decades in the game, Mick Haggarty is one of the most experienced and respected agents in Maitland and the Hunter Valley. A Class 1 Licensed Real Estate Agent, Auctioneer, and Stock & Station Agent, Mick is known for his no BS approach, honest advice, and people-over-property mindset.

He doesn't sugar-coat it — he tells it straight. Clients trust Mick because he takes the reins, keeps them informed, and delivers real results without the fluff. Backed by deep local knowledge and a history of record-breaking sales, he's the guy locals turn to when they want things done right.

Straight talk, smart strategy, and a serious passion for property — that's Mick Haggarty.

## Disclaimer

First National Real Estate Maitland a declare that all information contained herein is gathered from sources we deem to be reliable. However, we cannot guarantee its accuracy and interested persons should rely on their own inquiries.

All images in this e-book are the property of First National Real Estate Maitland. Photographs of the home are taken at the specified sales address and are presented with minimal retouching. No elements within the images have been added or removed.

Plans provided are a guide only and those interested should undertake their own inquiry.